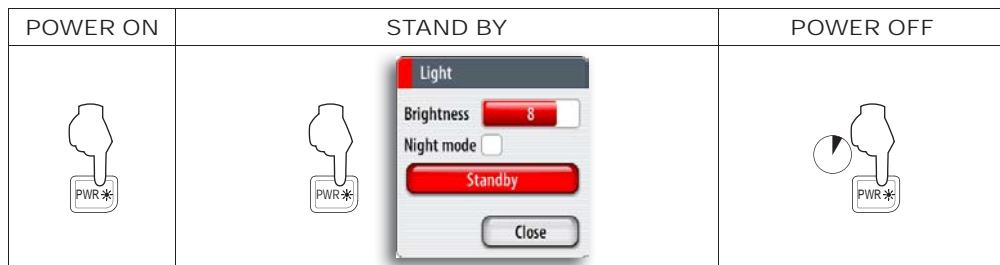
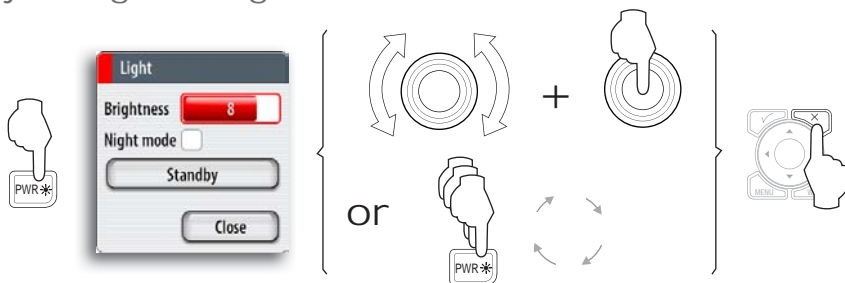


| | |
|----|---|
| 1 | Direct Access Keys (DAK). Provide direct access to a page. Repeated presses of each DAK cycles through several different pages that relate to the DAK |
| 2 | PLOT/MARK key. A short press activates the Plot menu, a long press positions a waypoint at the vessel position |
| 3 | Rotary knob. Used to maneuver in the menu system, and for context specific operation |
| 4 | GOTO/VESSEL key. A short press activates the Goto menu, a long press centers the chart to vessel position |
| 5 | ✓ (Tick) key. Activates/confirms current selection |
| 6 | X (Exit) key. Used to close dialogs, and to return to previous menu level. Removes the cursor from the screen on radar, sonar and chart panels |
| 7 | Cursor keypad used to move the cursor on the display, and to maneuver in the menu system |
| 8 | MENU key. A single press displays the context menu for active panel/overlay/operation. Pressing the key twice displays the Settings menu |
| 9 | WIN key, used on multiple panels pages. A short press toggles between the panels, a long press expands active panel to a full page panel |
| 10 | Zoom keys for radar, sonar and chart panels |
| 11 | MOB key. A long press positions a MOB waypoint at the vessel's position |
| 12 | Alpha numeric keypad used for entering numbers and text in dialog boxes. |
| 13 | Power key. A short press activated the Light dialog, a long press turns the unit off. |

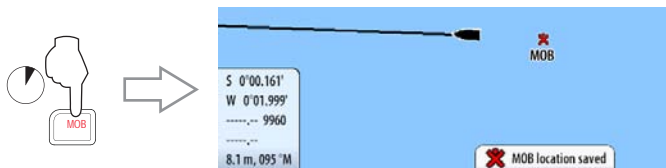
▶ Turning the unit on/off



▶ Adjusting backlight



▶ Activating the MOB function

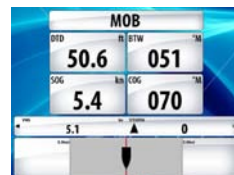


- a MOB waypoint is positioned at the vessel's position
- the display switch to a zoomed Chart panel, centered on vessel position
- the vessel starts navigating towards the MOB waypoint



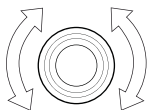
You cancel the navigation by pressing the **GOTO** key.

When the function is activate you can switch to the Steer panel to see navigation info.



▶ Operating the menu system

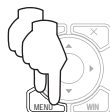
Using the rotary knob



Using the arrow keys



Exiting the menu



▶ Alarm messages



The NSE system will continually check for dangerous situations and system faults while the system is running.

Alarm sounding is turned ON/OFF for all alarms from the **Settings** menu.



▶ Page groups

CHART



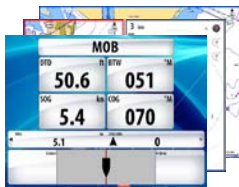
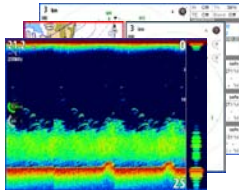
R



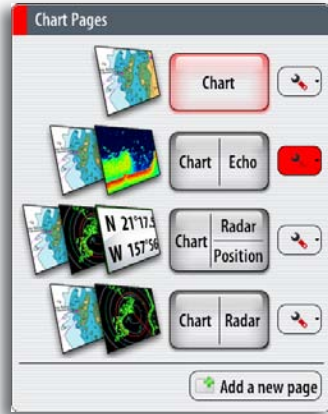
RADAR



ECHO



P

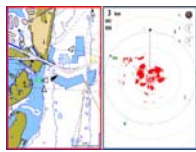


▶ Panels

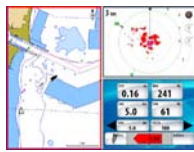
You can have up to 4 panels per page.



1-panel page



2-panels page



3-panels page



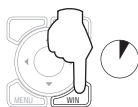
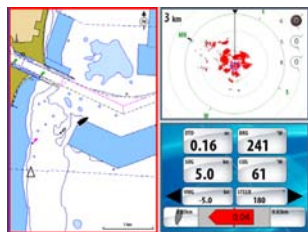
4-panels page

Selecting active panel in a split screen

Active panel is outlined with a red border. You switch between active panels by pressing the **WIN** key.



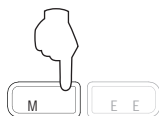
Maximizing active panel



▶ Positioning waypoints

You can position a waypoint at the vessel position from any panel by pressing the **PLOT** key:

- Short press: activates the Plot menu allowing you to specify waypoint details in the Waypoint dialog
- Press and hold: plots a waypoint at the vessel's current position

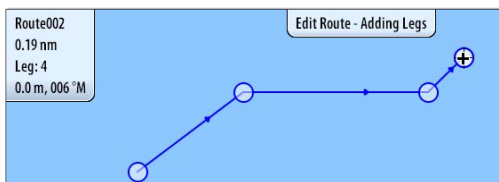


You can position a waypoint at the cursor position on a chart, radar and echo sounder panel by moving the cursor to selected position and then pressing the **PLOT** key.

► Creating a route

- 1 Press the **PLOT** key and select the new route option
- 2 Use the arrow keys to move the cursor to the position for the first waypoint
- 3 Confirm the position by pressing the rotary knob
- 4 Move the cursor to the position for the next waypoints, and confirm the position by pressing the rotary knob again
- 5 Repeat moving the cursor and pressing the rotary knob until all waypoints in the route are created
- 6 Press the **MENU** key to save the route

The Edit route mode and route information is indicated on top of the panel until the route is saved.



You can also create a route from the Routes table or by converting a track to a route. Refer to the *Utilities pages* in the *NSE8/NSE12 Operator manual*.

► Navigate a route

You can navigate towards a waypoint or along a predefined route. As soon as a route or a destination point is selected, you can switch to the Steer panel to see navigation info.

